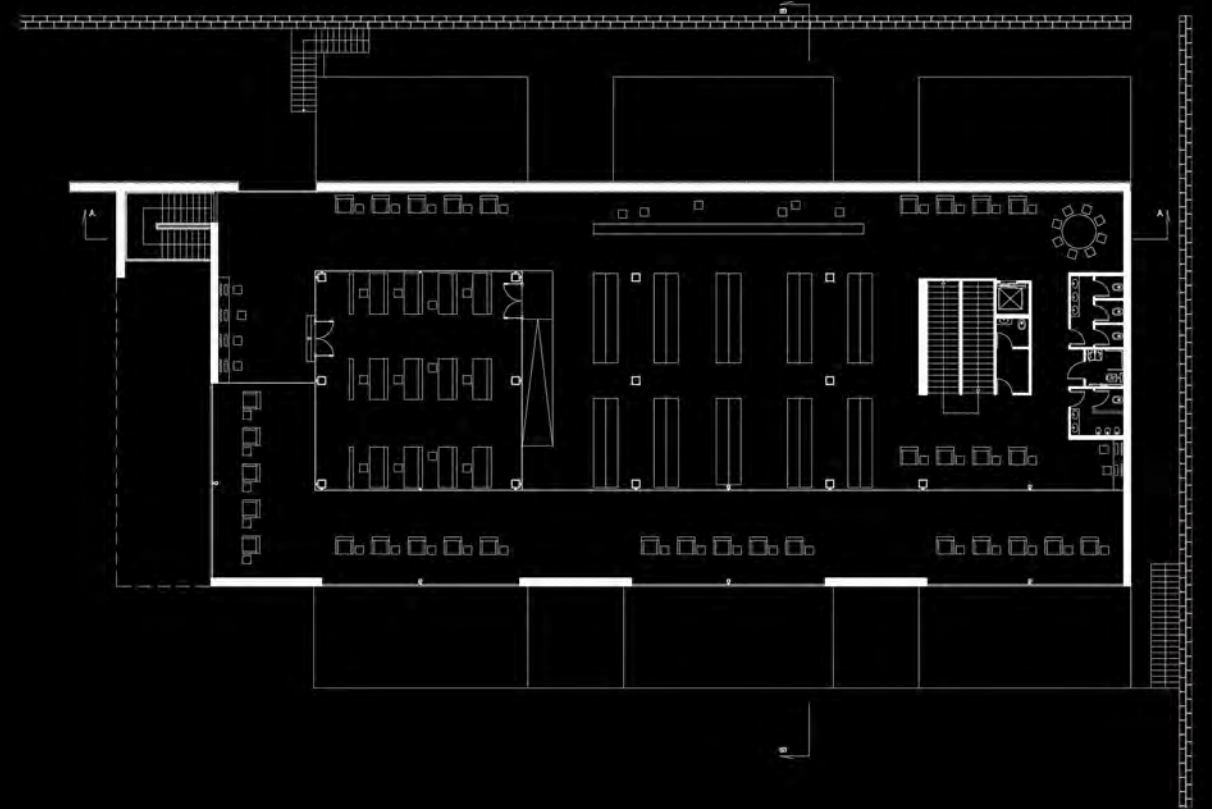
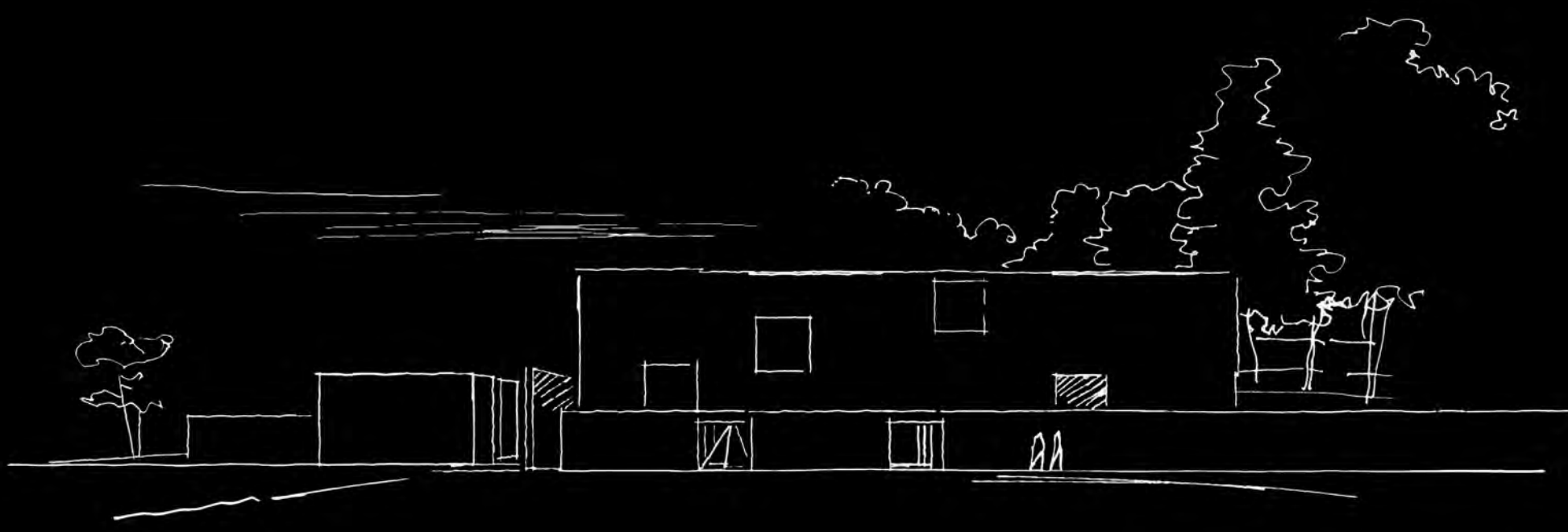
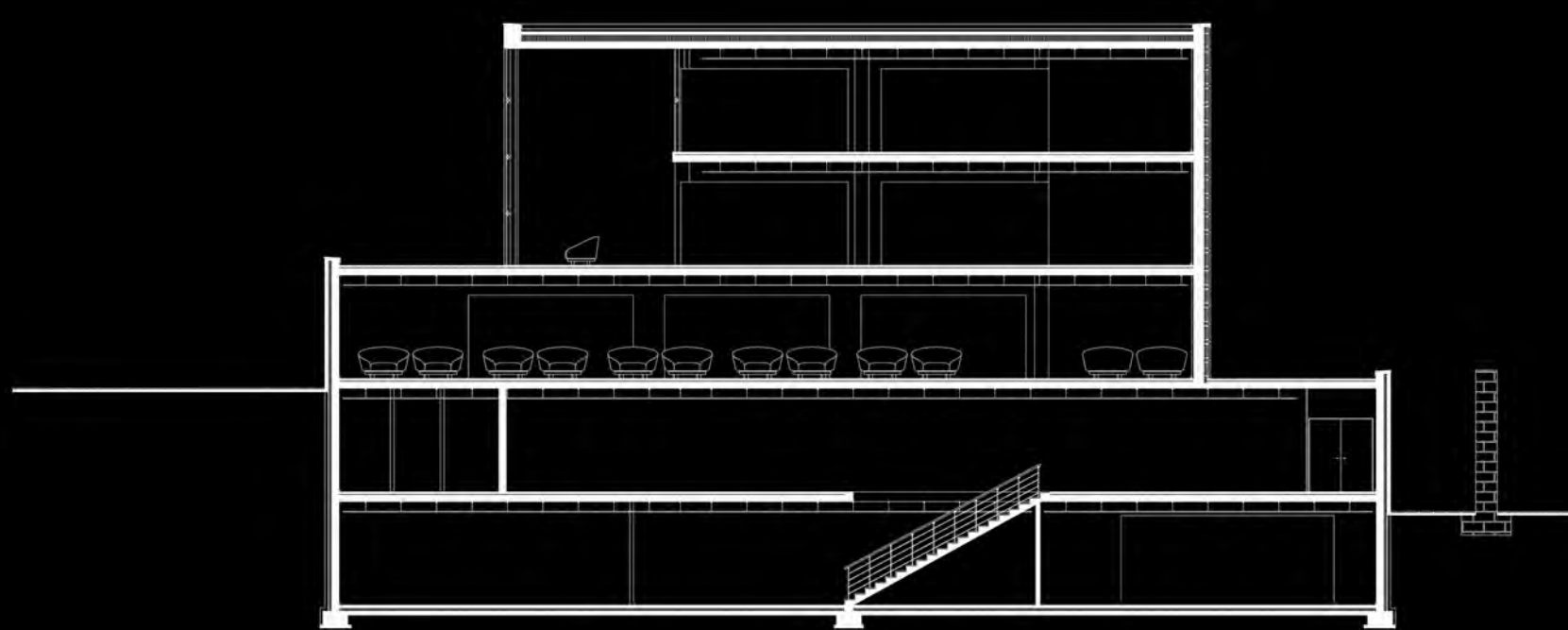


Benfica Municipal Library

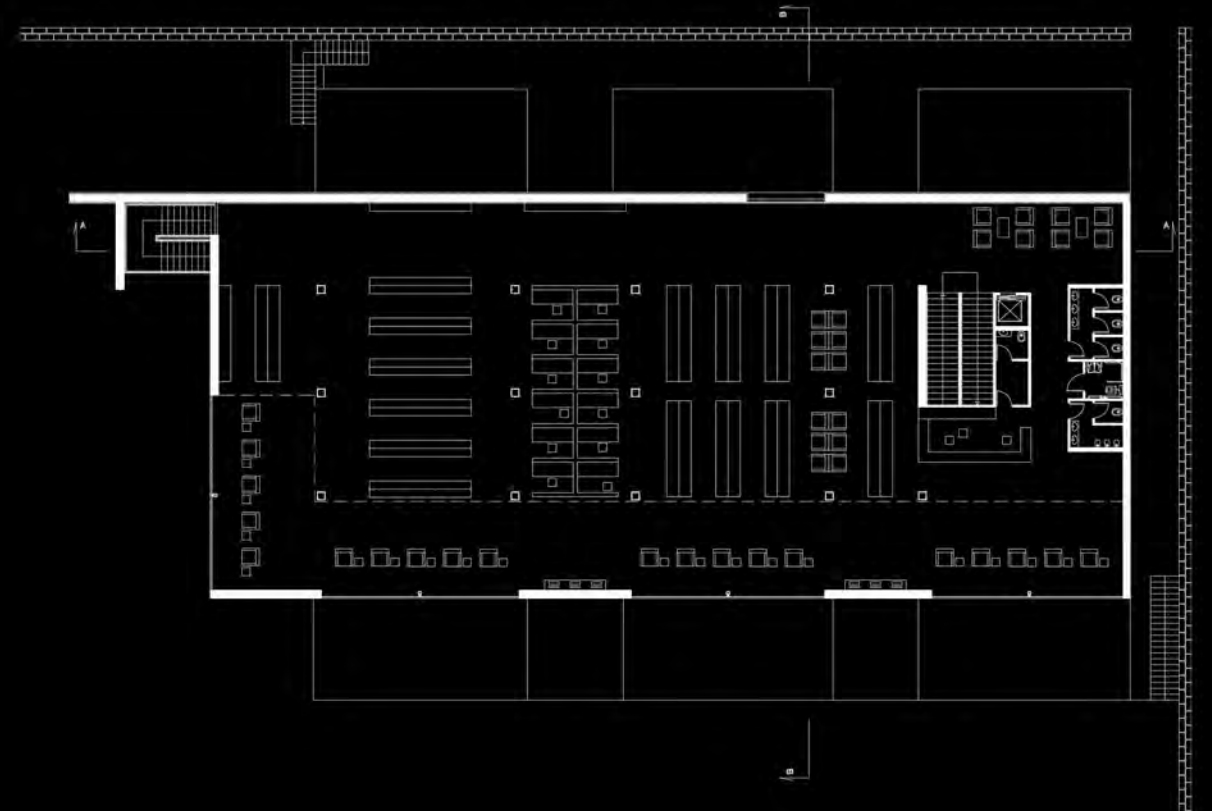
Technical University of Lisbon, Portugal
 Faculty of Architecture
 Mentor: arch. Pedro Lima Gaspar
 Author: Lea Bradašević



Third floor



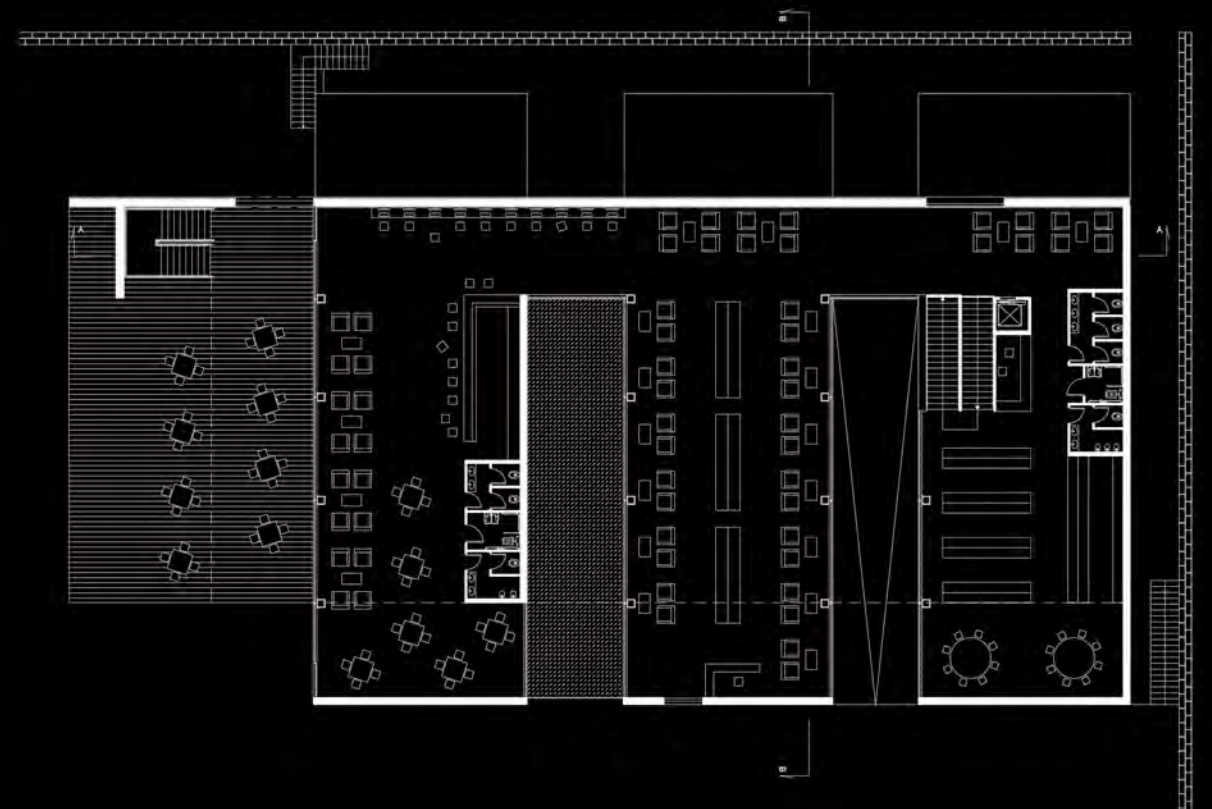
Section B-B



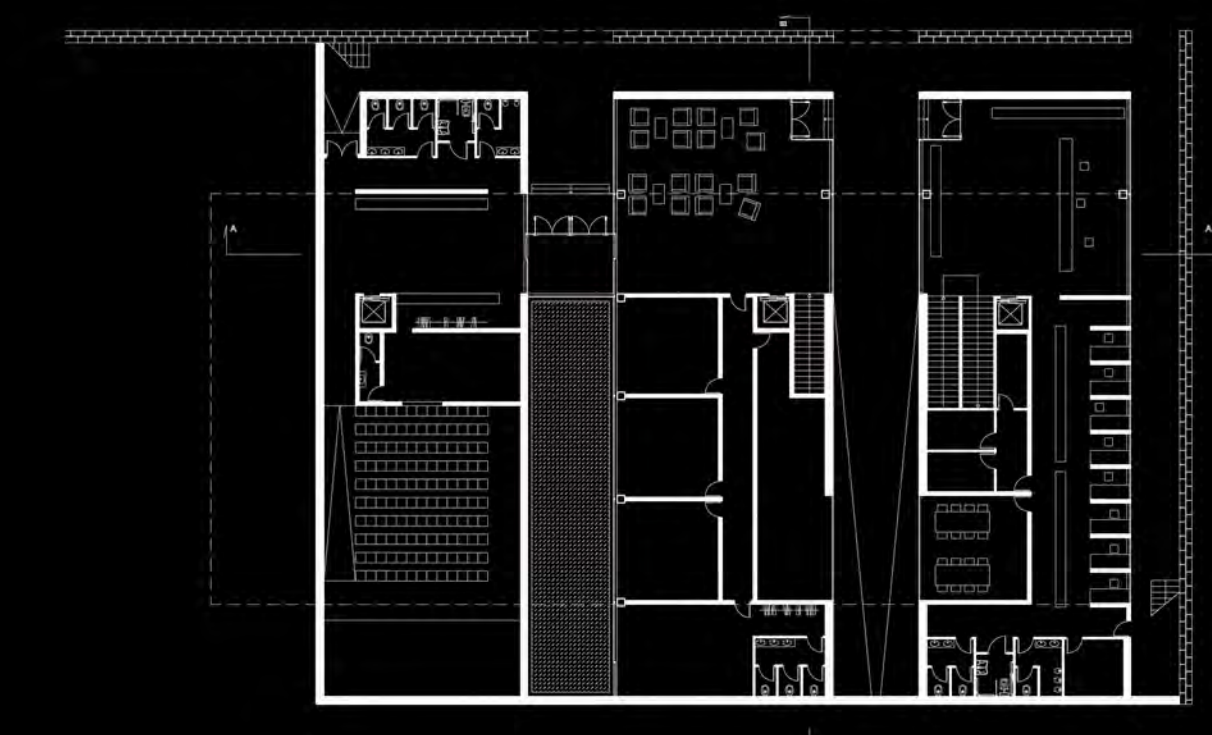
Second floor



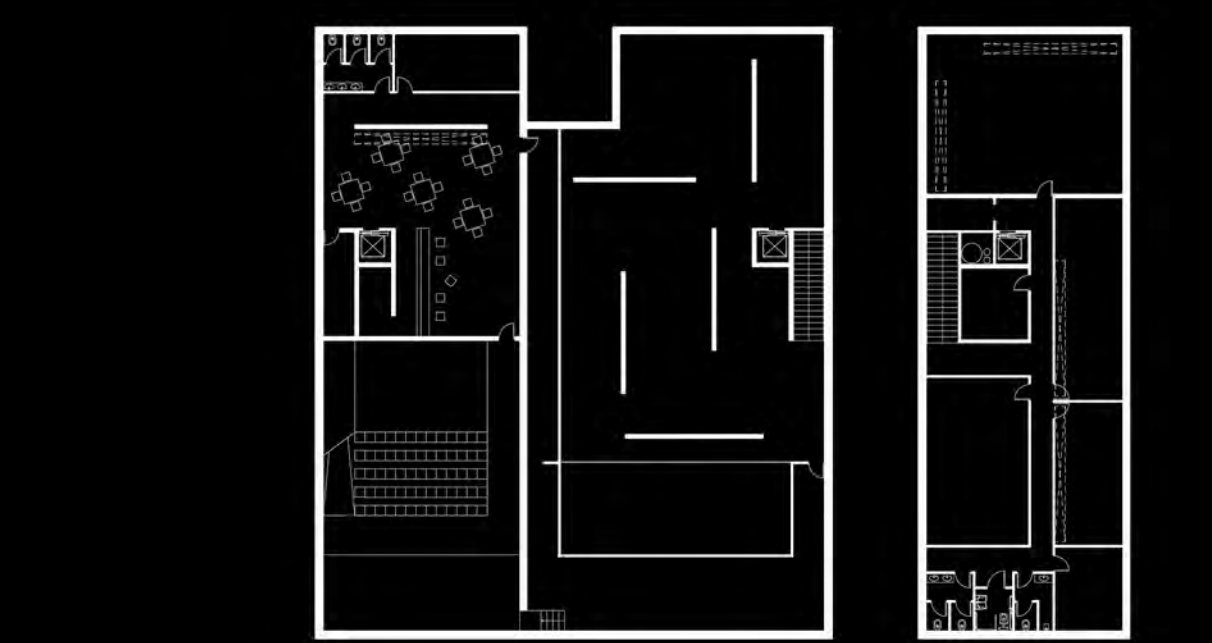
Section A-A



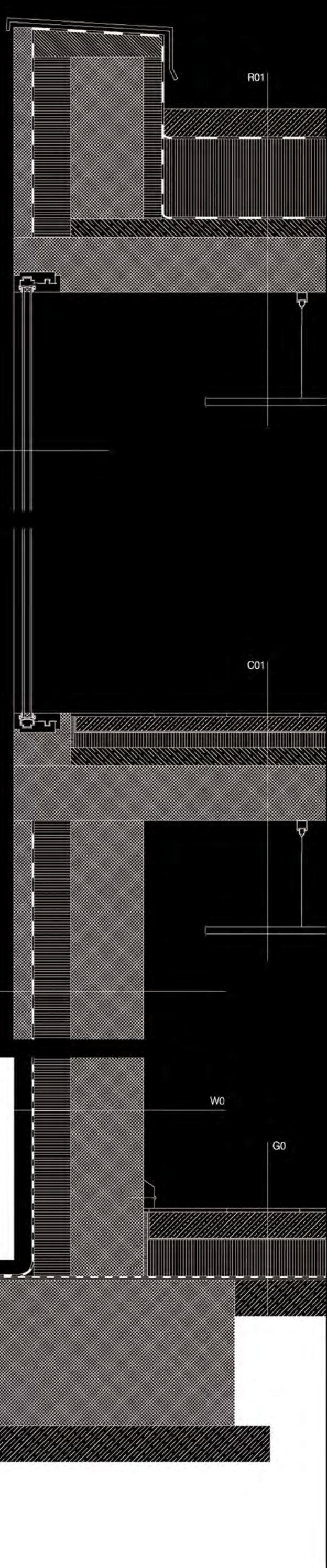
First floor



Ground floor



Basement



Detail of the double concrete wall

- screed
- thermal insulation
- reinforced concrete
- embankment
- concrete backing
- hydro insulation

R01
 cement screed 2% (7cm)
 PVC impermeable screen (1.5mm)
 thermal insulation (22cm)
 vapor barrier (0.5mm)
 concrete backing (5cm)
 concrete ceiling (15cm)
 false ceiling

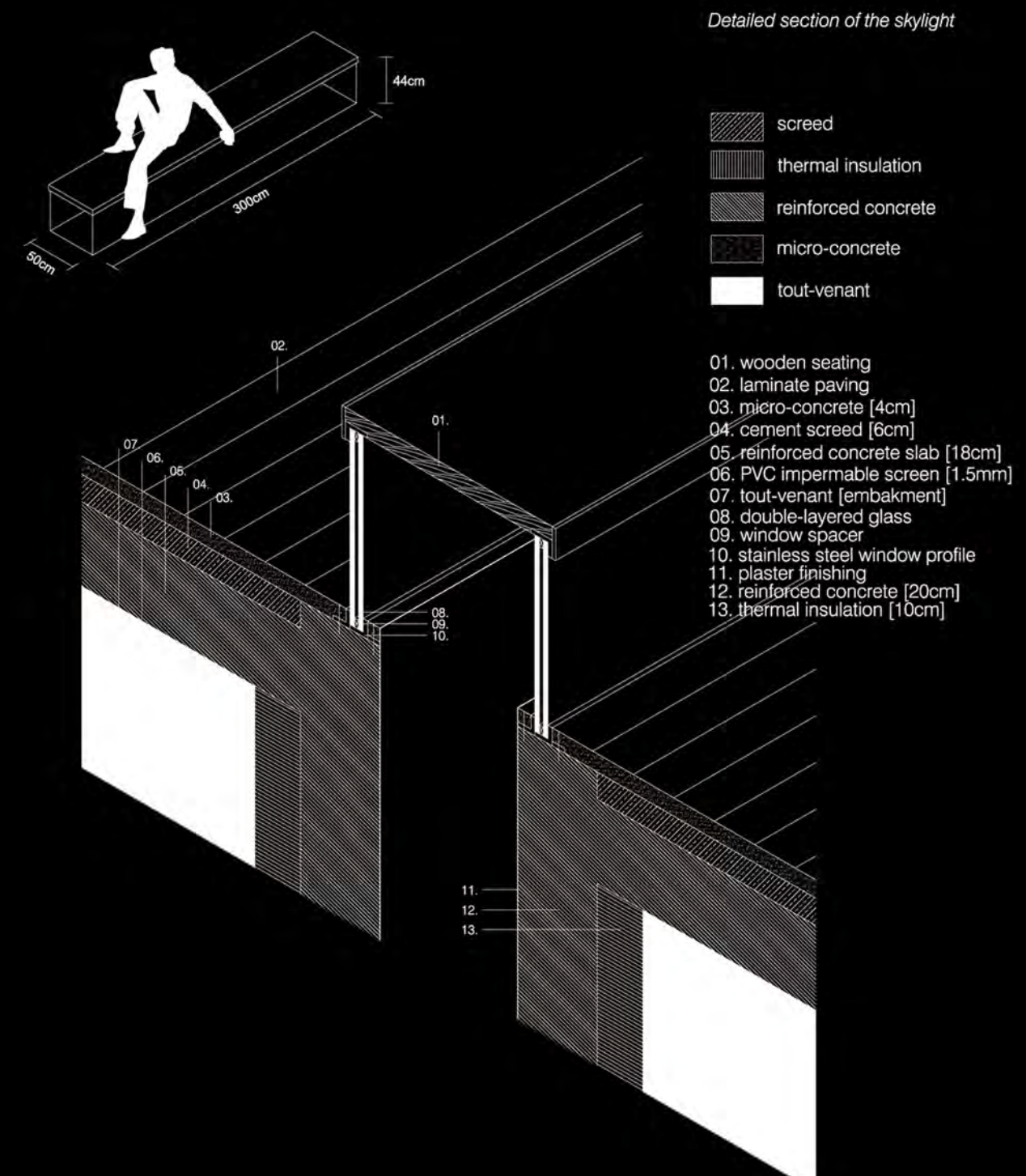
W03
 VITROCSA 3100 fixed glass panel

C01
 parquet (1cm)
 reinforced cement screed (4cm)
 protective PVC screen
 soundproof insulation (4cm)
 concrete backing (5cm)
 concrete ceiling (15cm)
 false ceiling

W01
 reinforced concrete finishing (5cm)
 windstopper
 thermal insulation (10cm)
 reinforced concrete (20cm)

G0
 parquet (1 cm)
 cement screed (7 cm)
 protective layer
 thermal insulation (10 cm)
 hydro insulation
 concrete backing (10 cm)
 tout-venant (embankment)

W0
 reinforced concrete (20 cm)
 thermal insulation (10 cm)
 hydro insulation
 protective layer (5 cm)



Detailed section of the skylight

- screed
- thermal insulation
- reinforced concrete
- micro-concrete
- tout-venant

01. wooden seating
02. laminate paving
03. micro-concrete (4cm)
04. cement screed (6cm)
05. reinforced concrete slab (18cm)
06. PVC impermeable screen (1.5mm)
07. tout-venant (embankment)
08. double-layered glass
09. window spacer
10. stainless steel window profile
11. plaster finishing
12. reinforced concrete (20cm)
13. thermal insulation (10cm)